

Prime farmland within the SMCP district (for policy 2.2.28)

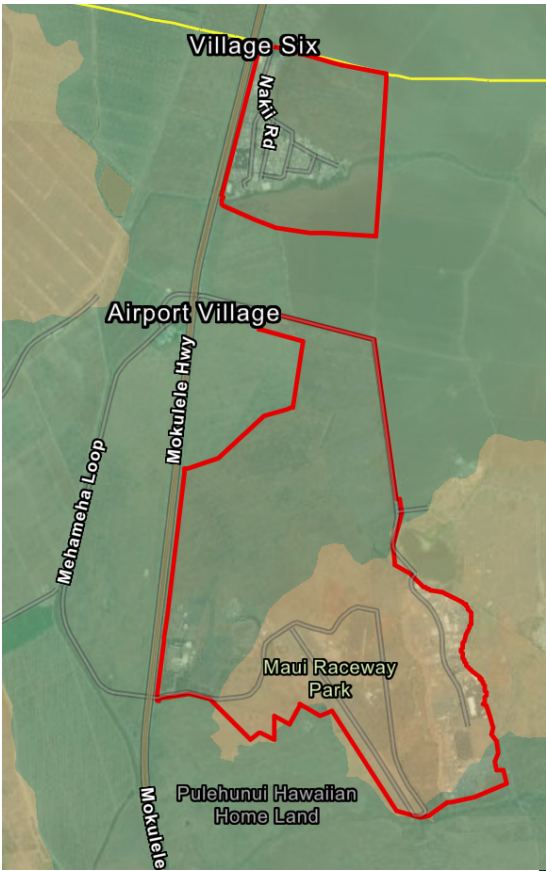
Rob Weltman, 3/26/2023

Yellow line is CP boundary. Red line is Urban Growth Boundary. Tan is not prime. Teal is prime if irrigated. Green is prime.



Close-ups of prime lands within the Urban Growth Boundary:





A more realistic picture of agricultural land quality is the study by the State Land Study Bureau. Class A lands are the darkest green areas. The only class A area inside the Urban Growth Boundary is around the light industrial area off of Maui Veterans' Highway.

